



3 Support & Bracket

Cable tray brackets and supports can be used for cable baskets or trucking. They are often used for suspending trays from the ceiling, fixing them to a wall or securely mounting them on the floor.

Support



C-Support



I-Support



L-Support



Double U-Support



Support



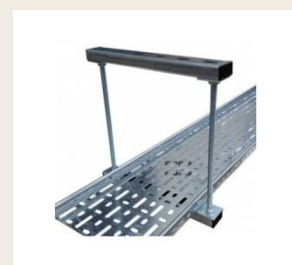
Box



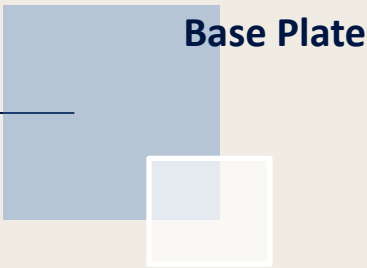
Ground Support



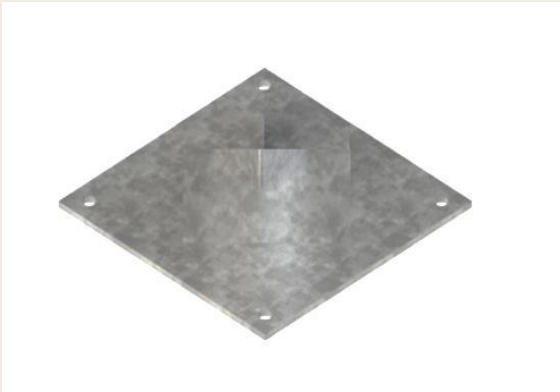
Double C Support



Ceiling Support



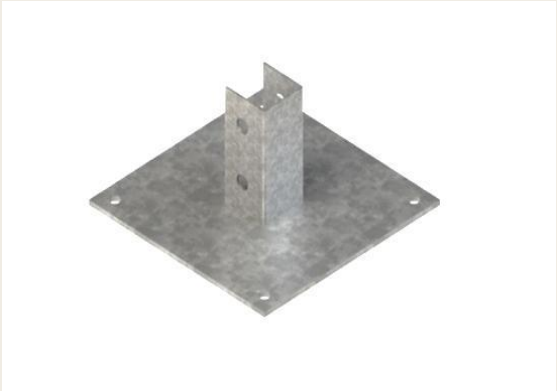
BASE PLATE



POST BASE – adjustable



POST BASE – One Side



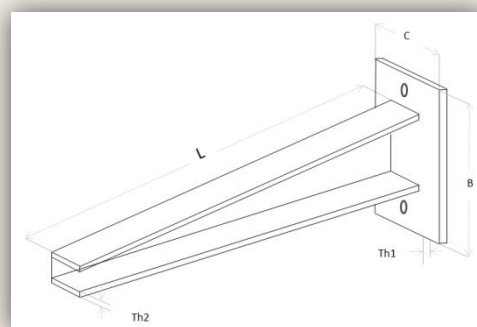
POST BASE – Tow Side

Code	Thickness 1	Thickness 2 (Base plate)
BASE PLATE		
POST BASE – adjustable		
POST BASE – One Side		
POST BASE – Tow Side		

Bracket

Brackets are used for supporting cable trays & ladders on walls, ceiling, and top floor and under floor.

Code	Length	Thickness
UNP Bracket	$70 \leq TH \leq 1020$	$2 \leq TH \leq 4$
General Bracket	$70 \leq TH \leq 1020$	$2 \leq TH \leq 4$
I Bracket	$70 \leq TH \leq 1020$	$2 \leq TH \leq 4$
L Bracket	$70 \leq TH \leq 1020$	$2 \leq TH \leq 4$



General Bracket



I Bracket



L Bracket



UNP Bracket